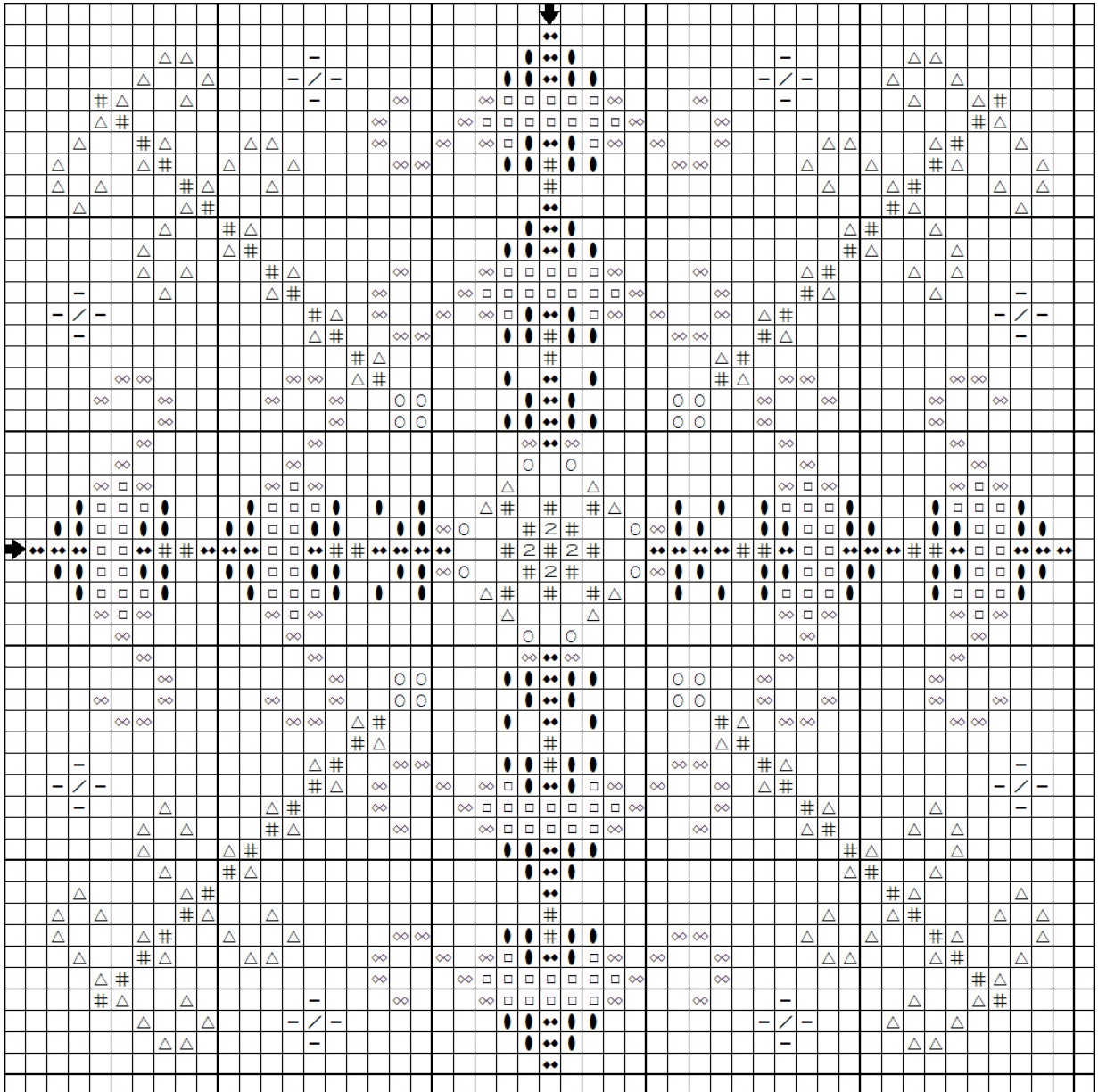


Reflections

By

Turquoise Graphics & Designs

www.tgdcharts.com



Model stitched on: 14 count Tropical Orange Aida #357275 from Wichelt Imports
www.wichelt.com

using DMC Embroidery Floss and Mill Hill Beads
www.millhill.com

Full Stitches:

Symbol	Type	DMC Number	Color
∞	DMC	830	Golden Olive-DK
○	DMC	832	Golden Olive
◆	DMC	918	Red Copper-DK
—	DMC	930	Antique Blue-DK
/	DMC	932	Antique Blue-LT
#	DMC	938	Coffee Brown-UL DK
Ʒ	DMC	3820	Straw-DK

Full stitches using DMC embroidery floss are stitched using 2 strands.

Mill Hill Beads:

Symbol	Type	Number	Color
□	Mill Hill Antique Glass Seed Bead	03013	Stormy Blue Heather
△	Mill Hill Antique Glass Seed Bead	03024	Mocha
●	Mill Hill Antique Glass Seed Bead	03046	Matte Cadet Blue

Mill Hill beads in the model are attached using Nymo Thread with half cross stitch.